



## Company Overview

# Mission: Control

Approach the fixed income and market-linked product markets with confidence

**InspereX** is digitally transforming how fixed income and market-linked products are accessed, evaluated and traded. We offer improved experiences, more efficient trade workflows, and better clarity.

**Transparent fixed income markets** driven by real-time, single source technology, BondNav®

**Deep access and data insights** through aggregating the retail, middle market, and institutional fixed income markets

**Best execution** targeting price improvements

**Tech-enabled, multi-channel, broad distribution**, improving liquidity for all market participants

**Professional, nationwide distribution coverage** offering personalized insights and tailored solutions

**Industry-leading origination, distribution, and education** for fixed income and market-linked products

## Access. Clarity. Confidence. Control.

We are powered by a mission to use innovation to put clients first, inspire trust, improve liquidity, and seek best execution. The clarity we bring to fixed income markets and market-linked products seeks to give participants better control over executing their strategies and achieving their goals.

InspereX unites the 21 years of success in fixed income and market-linked products origination, underwriting, distribution, and education of Incapital with the innovation of Silicon Valley's 280 CapMarkets and its revolutionary fixed income tech platform, BondNav.®

## BondNav®

BondNav® delivers competitive advantages through its award-winning, cloud-based technology.



Direct access to new issue offerings



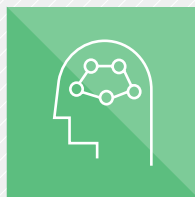
Pricing transparency



Identification of best available prices across numerous venues



Price improvement process



Crucial market insights



BestEx documentation



Concierge service every step of the trade

## Markets we serve

	Origination	Underwriting	Secondary Trading	Distribution
<b>Market-Linked Products</b> Leading originator and distributor of market-linked products and a top provider of secondary market liquidity	■	■	■	■
<b>U.S. Agencies &amp; Supranationals</b> #3 in number of new issue Agency deals on Bloomberg League Tables (as of 7/1/2021)		■	■	■
<b>Corporate Debt, including InterNotes®</b> \$180 billion of programmatic notes distributed since 1996, in a total market of \$275+ billion <sup>1</sup>	■	■	■	■
<b>Municipal Bonds</b> New issue underwriting and secondary trading, with special emphasis on broadening distribution	■	■	■	■
<b>Brokered Certificates of Deposit</b> Representing hundreds of banking institutions	■	■	■	■
<b>Mortgage- and Asset-Backed Securities (MBS &amp; ABS)</b> Trading and distribution across all sectors, including non-CUSIP loans			■	■
<b>Preferred Stock and Hybrid Securities</b> New issue underwriting and secondary market trading		■	■	■
<b>Closed-End Funds</b> New issue underwriting of funds from some of the world's largest asset managers		■		■
<b>Syndicate</b> Bringing new issue offerings of preferred stock and corporate debt to underserved investors who have not typically had access to primary issues		■		■
<b>Impact Investing</b> More than \$2.3 billion of ESG investments distributed since 2005; Legacy™ is our easy-to-access platform for offerings designed to generate measurable, values-based impact coupled with financial return	■	■	■	■

<sup>1</sup> Source: InspereX and Mergent as of 7/1/2021

## Forging strong client relationships



## Delivery powered by technology



### Underwriting & origination

Our proprietary online issuer interface and broad, tech-enabled distribution platforms power the capital markets, giving issuers control over building and pricing offerings while diversifying their sources of funding.



### Trading

Our trading philosophy is driven by current market trends and maximizing risk-reward tradeoffs; our seven desks take risk and hold inventory, improving liquidity for our clients.



### Investment access

Our tech-enabled, multi-channel distribution networks serve broker-dealers, institutional investors, public funds, asset managers, RIAs, and banks; BondNav® delivers confidence in pricing and execution for financial advisors, aggregating fixed income markets in real time.



### Education

Our award-winning digital library of FINRA-reviewed investor brochures, videos, and presentations, along with financial advisor education, is continuously expanding on our website and on customized, white-labeled partner sites.

An aerial photograph of a river delta, showing a network of channels and distributaries. The water is a mix of blue and green, with a prominent white sandbar in the upper right. A large, dark green diagonal overlay covers the left and bottom portions of the image. The text is positioned on this overlay.

▶ **InspereX** stands for  
people, products, and  
technology you can trust

## InspereX by the numbers

200

employees with principal offices in Delray Beach; San Francisco; Chicago; and New York City

2,000+

distribution partners

400+

issuers

75+

sales professionals covering our nationwide distribution network

\$670B+

of new issue securities distributed

InspereX LLC ("InspereX") and its affiliates explicitly disclaim any responsibility for product suitability or suitability determinations related to individual investors. This information should not be regarded by recipients as a substitute for the exercise of their own independent judgment, and the information provided herein is not an offer, solicitation, or a recommendation to buy, sell, or hold any security or investment strategy. There can be no assurance that the investments shown herein were or will be profitable, and this material does not take into account any investor's particular investment objectives, financial situation, particular needs, strategies, tax status, or time horizon. Further, any material contained herein should not be considered, construed, or followed as research material.

Past performance is no guarantee of future results. All investments carry a certain degree of risk, and there is no assurance that an investment will provide positive performance over any time period. Different time periods and market conditions may result in significantly different outcomes. Any financial product sold prior to maturity may be worth more or less than the original amount invested. Depending upon the specific product offering, investment risks include, but are not limited to, market risk, interest rate risk, credit risk, call risk, and liquidity risk. Additionally, unless otherwise specified in the respective offering documentation, the product(s) discussed herein are not FDIC insured, may lose value, and are not bank guaranteed.

BondNav is a technology platform that is not registered with the U.S. Securities and Exchange Commission as a broker-dealer or a member of the Financial Industry Regulatory Authority. Thus, securities listed on BondNav can only be bought or sold through InspereX LLC, a registered broker-dealer, or another registered broker-dealer. This information should not be regarded by recipients as a substitute for the exercise of their own independent judgment, and the information provided herein is not an offer, solicitation, or a recommendation to buy, sell, or hold any security or investment strategy.

This information is subject to change without notice. Neither InspereX LLC, its affiliates, nor its partners make any representations or guarantees as to the accuracy or completeness of any information contained herein and provide no assurance that this information is, in fact, accurate. Data provided by third-party sources is believed to be reliable, and there is no representation or warranty as to the current accuracy of, or liability for, decisions made based on this material.

Determining best execution for a particular order should include factors such as the prevailing conditions within the market(s) in question and a range of other quantitative and qualitative execution factors which may include, but are not limited to: price, inventory, liquidity, likelihood of execution and settlement, transaction size, proven expertise, discretion, speed of execution, or other considerations. Given the diversity of market structures and financial instruments, it would be impractical to uniformly apply a single standard of best execution. Thus, different factors might have to be taken into account when assessing best execution in the context of different instruments and markets.

**This information does not constitute an offer to sell or a solicitation of an offer to buy securities, nor shall there be any sale of securities in any state or jurisdiction in which such an offer, solicitation, or sale would be unlawful. The information contained herein is subject to change without notice.**

©2021 InspereX<sup>SM</sup>. All rights reserved. Securities offered through InspereX LLC, Member FINRA/SIPC. Technology services provided by InspereX Technologies LLC. InspereX LLC and InspereX Technologies LLC are affiliates.

[insperex.com](https://insperex.com)

SPEX-0V-0721